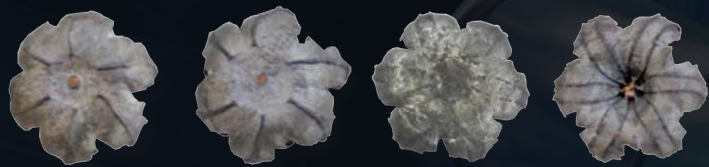


# MAGTECH FIRST DEFENSE BONDED FBI PROTOCOL TESTS RESULTS

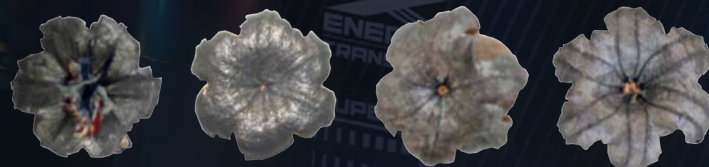


## BARE GELATIN



	9mm 124gr	9mm 147gr	.40 S&W 180gr	.45 AUTO 230gr
<b>Penetration</b>	12,5"	11,8"	11"	12,5"
<b>Expansion</b>	0,63"	0,66"	0,73"	0,77"
<b>Wgt. Retention</b>	99,88%	100%	99,35%	99,80%

## HEAVY CLOTHING



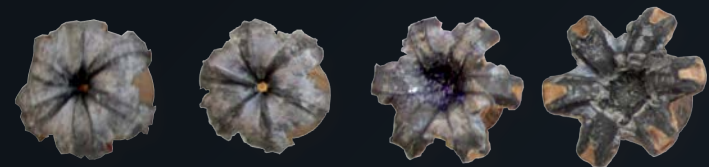
	9mm 124gr	9mm 147gr	.40 S&W 180gr	.45 AUTO 230gr
<b>Penetration</b>	17,4"	15,8"	12"	12,5"
<b>Expansion</b>	0,52"	0,58"	0,73"	0,77"
<b>Wgt. Retention</b>	100%	99,89%	99,81%	99,86%

## PLYWOOD



	9mm 124gr	9mm 147gr	.40 S&W 180gr	.45 AUTO 230gr
<b>Penetration</b>	15,7"	16,8"	15"	20"
<b>Expansion</b>	0,54"	0,49"	0,77"	0,48"
<b>Wgt. Retention</b>	100%	99,79%	99,06%	99,73%

## WALLBOARD



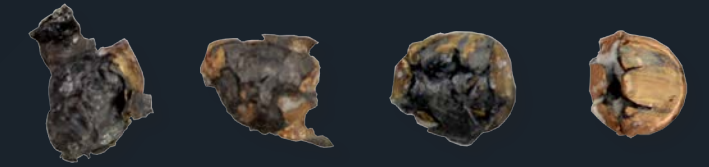
	9mm 124gr	9mm 147gr	.40 S&W 180gr	.45 AUTO 230gr
<b>Penetration</b>	13,4"	17,8"	13,9"	13"
<b>Expansion</b>	0,53"	0,57"	0,77"	0,79"
<b>Wgt. Retention</b>	99,88%	100%	99,72%	99,53%

## STEEL



	9mm 124gr	9mm 147gr	.40 S&W 180gr	.45 AUTO 230gr
<b>Penetration</b>	20"	18,4"	21,8"	22,4"
<b>Expansion</b>	0,43"	0,46"	0,46"	0,51"
<b>Wgt. Retention</b>	100%	99,58%	99,44%	99,80%

## AUTO GLASS



	9mm 124gr	9mm 147gr	.40 S&W 180gr	.45 AUTO 230gr
<b>Penetration</b>	14"	14,5"	16,4"	18,6"
<b>Expansion</b>	0,75"	0,61"	0,57"	0,56"
<b>Wgt. Retention</b>	92,28%	99,78%	94,29%	99,66%